

P R E S E R V E D F L O W E R S

NEW

Catalogue



<https://www.thevintageflowerbox.com.au/>

DELIVERING

Delivering & Collecting your flowers

Steps to follow

Before Delivery Flower Care

- To ensure that your bouquet lasts as long as possible, it is important to take good care of it once the festivities are done. This allows you to enjoy the beauty and fragrance of the flowers for a little while longer.
 - Bouquets are generally out of water for a full day during your wedding, so whenever you can remember to drop it in water, do!
 - At the end of your wedding night remember to place the flowers back in water or a vase & store somewhere cool. Be sure to grab a centrepiece too as those flowers are in water all day and hold up better!
 - After your wedding, recut the stems, cutting them 1cm off the bottom of the stems and keep in fresh water until you deliver them. This can help the flowers absorb water more effectively, keeping them looking fresher for longer.
 - The sooner we receive your flowers the better result you will have once it is preserved. We ask your flowers are 1-3 day old for the best preserving result!

After Collection Framed Flower Care

- Like any natural product, care is needed to ensure the durability of the flowers. Many factors will play a major role in how long your flowers will last such as the amount of sunlight, humidity, and heat that the frame is exposed to. These factors will determine its lifespan.
 - Keep your frame lying flat on travels
 - Avoid contact with direct sunlight to prevent discoloration or fading
 - DO NOT store in damp dark places
 - Keep top glass clean with glass cleaner only. Spray on rag first, not directly on glass.
 - Never open the frame unless spoken about
 - Ensure you use correct hanging fasteners for the weight of your frame and if worried use extra to be safe. Do not use M3 or Command Hanger Hooks.

Drop off & Collection time

- Let me know a time and day that suits to drop off & collect your bouquet. If you cannot drop your bouquet to Petrie QLD, we can pick up flowers for a small fee. I am also happy to arrange postage. Please be on time, as I do have other brides and appointments in between drop-offs and collections, or send me a message that you are running late so I can reschedule appointments.
 - Any Time available including:
 - Monday 8am-3pm
 - Tuesday CLOSED
 - Wednesday 8am-3pm
 - Thursday 8-3 pm
 - Friday 8am-3pm
 - Saturday 11am-1pm
 - Sunday CLOSED

POSTING

Posting your flowers

Before shipping, keep flowers in a cool dry place. Recut stems and keep in fresh water until shipped

Steps to follow - express Posting your flowers

What you need:

- A large box bigger than your flowers, you can purchase this from office works or Australia post office:
- Tissue paper & paper towels
- String or tape
- Soft padding (Pillow fluff or packing peanuts)
- Scissors or secateurs
- Pen & permanent marker
- NO NEWSPAPER, WET PACKS or PLASTICS: These will cause your flowers to mould and we will not be able to use them. Please do not wrap flowers in wet paper towels. Keep all packing materials dry

How to pack:

1. Pull your flowers out of water and dry the stems thoroughly, Wrap your stems in paper towelette & secure with a string or tape.
2. Keep your ribbon/s dry & any special tokens you want left on the stems, don't remove (unless you would like replacement ribbon)
3. Put scrunched up paper around the inside of the box to cushion for your flowers, make a well in the centre for your stems to sit.
4. Place your flowers in the centre of your large box (stems should sit in the well you created) Your flowers should not touch the sides of the cardboard box. one finger gap is great
5. Now surround the flower delicately with paper towels, tissue paper or soft padding. NO NEWSPAPER, WET PACKS or PLASTICS
6. Put a little padding on top if necessary to stop movement of your bouquet, don't crush or press down on the flowers (please check the lid won't crush them).
7. Make sure your flowers have enough room so the flowers don't crush on top (please select the right box for your flowers)
8. If adding a Buttonhole, please pop him in a little container so he doesn't get lost or crushed and place him at the bottom in a corner,
9. Adding wedding certificate or invitation (please make sure its secure, and water tight)
10. Extra flowers, just add them in with your wedding bouquet.
11. PLEASE ADD YOUR NAME OR INVOICE INTO THE BOX.

For further information and label information:

https://www.thevintageflowerbox.com.au/_files/ugd/a8597d_823327b2f3ec48008c2cbc4dc770e8d8.pdf

POSTING

Posting your flowers

Orchids & Delicate Flowers

- If your bouquet has orchids, please be super careful when packing them, I would recommend cutting them out of your bouquet & keeping them on top of your flower with a little padding

Damaged or Unusable Flowers

- Flowers that arrive damaged or beyond a condition that is acceptable for preservation will not be replaced without your consent and approval. Any additional charges for replacement flowers will be added to your balance.
- We recommend using Australia Express Post guaranteed next day delivery. We have found this to be a very reliable and cost-effective option costing approximately \$35.00 – \$280.00, depending on weight and location.

Lost Box or Late Arrival Date

- The vintage flower box is not responsible for any lost, late or damaged flowers. Unfortunately this is out of our hands, 99% of the time we receive the flowers in good condition.
 - If they arrive damaged, I will send you pictures and will be in contact
 - If flowers are lost, you will need to contact the post office and investigate what's happened and from them we can discuss further, with what you would like to do.

Return Shipping

- Your framed flowers will be shipped to the address that you specify during the Shipping process. If you are shipping to more than one address, additional shipping charges will apply. If you anticipate moving before your order is completed, please contact us with your new shipping address to avoid additional shipping charges due to returned or forwarded delivery. Tracking number will be sent in an email once flowers have been completed, we used a company that's insures door-to-door delivery, documentation, timely tracking and notifications.
- Once your piece is completed there will be a flat rate cost for postage \$172.88 additional, insurance can be added for and extra \$100. the cost of return postage will be on the invoiced and paid all together. (Australia only) the return postage is always at customers cost..

Terms

- It is your responsibility to confirm your design specifications with us prior to the commencement of the preservation and design process. If you are unsatisfied with your frame, you have 30 days after the receipt of your completed order to contact the vintage flower box with your concerns. You are responsible for all shipping and insurance charges to return the order to us as well as the return shipment to you.

PRICE LIST

Standard Frames



15 x 20

Frame Dimensions: W 15cm x L 20cm

Colour: White

Description: thin border Frame Light weight Glass sheeting, MDF Material

Suitable: for Buttonhole or Corsage

Price: \$180



30 x 30

Frame Dimensions: W 32cm x L 32cm x D 5cm

Description: Lightweight Glass

Suitable: Flower crowns, mini flower girl posies, or tokens

Colour: White

Price: \$380



40 x 40

Frame Dimensions: W 42cm x L 42cm x D 5cm

Description: Lightweight Glass

Suitable: standard bouquet with no stems or flower girl posies

Colour: White or Black

Price: \$480



40 x 50

Frame Dimensions: H 53cm x L43cm x W 5cm

Colour: White or Black

Material: light weight Glass sheeting, MDF

Material Suitable: Small imported flowers or dainty Whimsical flowers, cottage flowers

Style: elongated & sheaf style bouquets or wildflower style/ small posy or invite.

Price: \$580

PRICE LIST

Standard Frames cont...



50 x 50

Frame Dimensions: H 53cm x L53cm x W 5cm

Colour: White, Black & Flux Timber

Material: light weight Glass sheeting, MDF

Material Suitable: foror Large/Natives & imported flowers or bouquet with stems or can

Style: elongated & sheaf style bouquets or dinner plate size, Round, Hand tie, stacked, wildflowers. can inc Buttonhole or invite.

Price: \$680



50 x 70

Frame Dimensions: H 53cm x L 73cm x W 5cm

Colour: White or Black

Material: Medium weight – Glass sheeting, MDF Material

Flowers Suitable: Large/Natives & imported flowers or dainty Whimsical flowers, cottage flowers

Style: Bouquet with long stems Round, Hand tie, stacked, wildflower long trailing flowers inc phaly orchids or hanging Amaranthus can include buttonhole & any wedding memorabilia etc.

Price: \$880

I'm attending a wedding and I'd like to give the couple a custom frame for their special day. How should I go about this?

Our couples are always so appreciative to be gifted their preserved sentimental flowers after their wedding! If you'd like to gift the couple a gift card or custom piece featuring the flowers from their wedding, arrangements need to be made prior to the event, ensuring flowers are to be mailed asap after the wedding. Reaching out to us here before the event is best, we would be more than happy to walk you through the process!

PRICE LIST

Oak Custom Frames



50 x 60

Frame Dimensions: H 50cm x L60cm x W 6cm

Colour: Tasmanian oak (bees wax - walnut or Ebony black)

Material: Light weight – Glass sheeting, MDF Material + Framing - timber frame, crafted & stained

Material Suitable: Small imported flowers or dainty Whimsical flowers, cottage flowers

Style: elongated & sheaf style bouquets or wildflower style/ small posy or invite.

Price: \$860



60 x 60

Frame Dimensions: H 60cm x L60cm x W 6cm

Colour: Painted White /Black or Tasmanian oak (bees wax - walnut or Ebony black)

Material: Medium weight – Glass sheeting, MDF Material + Framing - timber frame, crafted & painted

Suitable: arge/Natives & imported flowers or dainty Whimsical flowers, cottage flowers

Style: elongated & sheaf style bouquets or wildflower style/ dinner plate or larger size.

Price: \$960



60 x 80

Frame Dimensions: H 60cm x L80cm x W 6cm

Colour: Tasmanian oak (bees wax - walnut or Ebony black)

Material: Heavy weight – Glass sheeting, MDF Material + Framing - timber frame, crafted & painted

Suitable: extra Large/ Natives & imported flowers or dantiy Wimsical flowers, cottage flowers

Style: Bouquet with long stems Round, Hand tie, stacked, wildflower long trailing flowers inc phaly orchids or hanging Amaranthus can include buttonhole & any wedding memorabilia etc.

Price: \$1060

Colours Available

Framing - Tasmanian oak

Bee's wax finish

walnut sain (dark Brown)

Ebony black (stain)



PRICE LIST

Custom Frames



50 x 60

Frame Dimensions: H 50cm x L60cm x W 6cm

Colour: Painted White /Black Material: Light weight – Glass sheeting, MDF Material + Framing - timber frame, crafted & painted

Material Suitable: Small imported flowers or dainty Whimsical flowers, cottage flowers

Style: elongated & sheaf style bouquets or wildflower style/ small posy or invite.

Price: \$680



60 x 60

Frame Dimensions: H 60cm x L60cm x W 6cm

Colour: Painted White /Black

Material: Medium weight – Glass sheeting, MDF Material + Framing - timber frame, crafted & painted

Suitable: large/Natives & imported flowers or dainty Whimsical flowers, cottage flowers

Style: elongated & sheaf style bouquets or wildflower style/ dinner plate or larger size.

Price: \$780



60 x 80

Frame Dimensions: H 60cm x L80cm x W 6cm

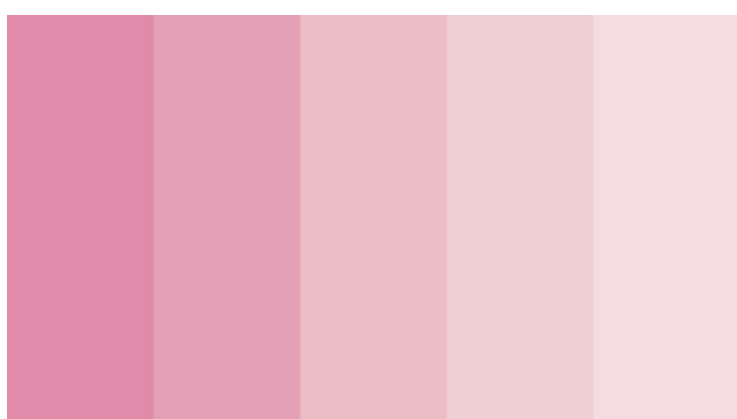
Colour: Painted White /Black

Material: Heavy weight – Glass sheeting, MDF Material + Framing - timber frame, crafted & painted

Suitable: extra Large/ Natives & imported flowers or dainty Whimsical flowers, cottage flowers

Style: Bouquet with long stems Round, Hand tie, stacked, wildflower long trailing flowers inc phaly orchids or hanging Amaranthus can include buttonhole & any wedding memorabilia etc.

Price: \$980



Colours Available

Painted White /Black or any colour of the rainbow

PRICE LIST

Pressed Petals & Frames

30 x 40

Frame Dimensions: H 30cm x L 40cm x W 5cm

Colour: White, Black & Flux Timber

Material: Lightweight – Glass sheeting, MDF Material Suitable

Suitable: Natives & imported flowers or dainty Whimsical flowers, cottage flowers

Price: \$580

40 x 50

Frame Dimensions: H 53cm x L 43cm x W 5cm

Colour: White or Black

Material: light weight Glass sheeting, MDF Material

Suitable: Small imported flowers or dainty Whimsical flowers, cottage flowers

Price: \$680

50 x 70

Frame Dimensions: H 53cm x L 73cm x W 5cm

Colour: White or Black

Material: Medium weight – Glass sheeting, MDF Material

Suitable: imported flowers or dainty Whimsical flowers, cottage flowers

Price: \$1,080

How long will my flowers last?

Like any natural product, care is needed to ensure the durability of the flowers. Many factors will play a major role in how long your flowers will last such as the amount of sunlight, humidity, and heat that the frame is exposed to. These factors will determine its lifespan.

PRICE LIST

Pressed Petals Glass



A5 Size

Frame Dimensions: H 29cm x L 24cm x W 4cm

Colour: White Wash

Material: light weight Glass sheeting, MDF

Suitable: Dainty Whimsical flowers, cottage flowers

Price: \$380



A4 Size 33 x 45

Frame Dimensions: H 33cm x L 45cm x W 4cm

Colour: White & Black

Material: light weight Glass sheeting, MDF

Suitable: Natives & imported flowers or dainty Whimsical flowers, cottage flowers

Price: \$580



40 x 50

Frame Dimensions: H 50cm x L 40cm x W 5cm

Colour: White, Black & faux Timber

Material: light weight Glass sheeting, MDF

Suitable: Natives & imported flowers or dainty Whimsical flowers, cottage flowers

Price: \$780



50 x 50

Frame Dimensions: H 50cm x L 50cm x W 5cm

Colour: White, Black & Faux Timber

Material: light weight Glass sheeting, MDF

Suitable: Natives & imported flowers or dainty Whimsical flowers, cottage flowers

Price: \$980



50 x 70

Frame Dimensions: H 29cm x L 24cm x W 4cm

Colour: White, Black & Faux Timber

Material: light weight Glass sheeting, MDF

Suitable: Natives & imported flowers or dainty Whimsical flowers, cottage flowers

Price: \$1,180

PRICE LIST

Double Glass Frames (3D Flowers)

We can do Custom frames + \$100



40 x 50

Frame Dimensions: H 53cm x L53cm x W 5cm

Colour: White, Black & Flux Timber

Material: Heavy – Double Glass sheeting, MDF extra brackets & hanging rope/Ribbon

Style: elongated & sheaf style bouquets or dinner plate size, Round, Hand tie, stacked, wildflowers. can inc

Price: \$680



50 x 50

Frame Dimensions: H 53cm x L53cm x W 5cm

Colour: White, Black & Flux Timber

Material: Heavy – Double Glass sheeting, MDF extra brackets & hanging rope/Ribbon

Suitable: Large/Natives & imported flowers or bouquet with stems Style: elongated & sheaf style bouquets or dinner plate size, Round, Hand tie, stacked, wildflowers. can inc Buttonhole or invite.

Price: \$780



50 x 70

Frame Dimensions: H 53cm x L 73cm x W 5cm

Colour: White or Black

Material: Heavy – Double Glass sheeting, MDF extra brackets & hanging rope/Ribbon

Flowers Suitable: Large/Natives & imported flowers or dainty Whimsical flowers, cottage flowers

Style: Bouquet with long stems Round, Hand tie, stacked, wildflower long trailing flowers inc phaly orchids or hanging Amaranthus can include buttonhole & any wedding memorabilia etc.

Price: \$1,080

WILL MY FLOWERS CHANGE COLOUR ?

Yes. All flowers that are preserved will change in colour, white flowers will become creamy and some colours, especially red flowers, will become a little darker. Over time some flowers may become more antique in appearance, especially pink, peach, white and yellow flowers.

We can not guarantee that your flowers will maintain their original colour or dyed flowers such as orchids as all flowers will fade in the dehydration process. Flowers that we do not recommend for preservation include succulents, chrysanthemums, asparagus fern and Anthurium. Most other traditional wedding flowers preserve well.

PRICE LIST

Extras



Name + Date

There is nothing more special than adding your Names & Date of the big special day. These decals are great way to add a personal touch.

Adding Decal: your name & wedding date

Writing : Classic script (pictures provided)

Colour: White & Black

Price: \$100



Embroidery: Name & Date

Hand stitched Embroidery

Price: \$145



Add Buttonholes, wedding certificate or tokens

Price: free



Resin Bits & Bobs

Behold the wondrous art of resin! Delicate hair clips, pendants, and keychains are but a few trinkets that we can do, as a add on to your frame purchase only*

Price : \$130

Important Information about Your Order:

Here are a few things to keep in mind as you complete your purchase:

We only accept bank transfer or cash on drop off.

You have the flexibility to choose your frame and upgrade your frame size.

A \$100 non-refundable security deposit is required when submitting the booking form.

Full payment is due on the day of drop off or the postage date.

Be sure to pre-confirm your order before booking, as we are often fully booked.